

A central role for spinal dorsal horn neurons that express neurokinin-1 receptors in chronic itch

Tasuku Akiyama^{a,b,*}, Tony Nguyen^a, Eric Curtis^a, Katsuko Nishida^a, Jahnvi Devireddy^a, Jeremy Delahanty^a, Mirela Iodi Carstens^a, Earl Carstens^a

Abstract

We investigated roles for spinal neurons expressing the neurokinin-1 receptor (NK1R) and/or gastrin-releasing peptide receptor (GRPR) in a mouse model of ovalbumin (OVA)-induced chronic atopic dermatitis. Mice receiving repeated topical application of OVA exhibited atopic-like skin lesions and behavioral signs of chronic itch including spontaneous scratching, touch-evoked scratching (alloknesis), and enhancement of chloroquine-evoked scratching (hyperknesis). Substance P-saporin (SP-SAP) and bombesin-saporin (BB-SAP) were intrathecally injected into OVA-sensitized mice to neurotoxically ablate NK1R- or GRPR-expressing spinal neurons, respectively. SP-SAP diminished the expression of NK1R in the superficial spinal dorsal horn and significantly attenuated all behavioral signs of chronic itch. BB-SAP reduced the spinal dorsal horn expression of GRPR and significantly attenuated hyperknesis, with no effect on spontaneous scratching or alloknesis. To investigate whether NK1R-expressing spinal neurons project in ascending somatosensory pathways, we performed a double-label study. The retrograde tracer, Fluorogold (FG), was injected into either the somatosensory thalamus or lateral parabrachial nucleus. In the upper cervical (C1-2) spinal cord, most neurons retrogradely labeled with FG were located in the dorsomedial aspect of the superficial dorsal horn. Of FG-labeled spinal neurons, 89% to 94% were double labeled for NK1R. These results indicate that NK1R-expressing spinal neurons play a major role in the expression of symptoms of chronic itch and give rise to ascending somatosensory projections. Gastrin-releasing peptide receptor-expressing spinal neurons contribute to hyperknesis but not to alloknesis or ongoing itch. NK1R-expressing spinal neurons represent a potential target to treat chronic itch.

Keywords: Atopic dermatitis, Chronic itch, Central sensitization, Alloknesis, Hyperknesis, Substance P, Neurokinin-1 receptor, Gastrin-releasing peptide receptor

1. Introduction

Chronic itch is thought to result from increased sensitivity of itch-signaling pathways, resulting in symptoms of spontaneously occurring itch, itch in response to nonitchy light touch (“alloknesis”), and increased itch to a normally itchy stimulus such as an insect bite (“hyperknesis”). Under conditions of chronic itch such as atopic dermatitis (AD), it is hypothesized that peripheral and/or central itch-signaling neurons become sensitized to provide a stronger itch signal to the central nervous system. However, the cellular and molecular mechanisms that underlie this process are currently unknown.

Recent studies have revealed cellular and molecular mechanisms underlying acute itch.^{1,12,20} A variety of chemicals can elicit itch through histamine-dependent and histamine-independent pathways.¹ Histaminergic and nonhistaminergic

itch require TRPV1 and TRPA1, respectively.^{18,33} In the spinal cord, glutamate and neuropeptides including substance P, gastrin-releasing peptide, neuromedin B, and natriuretic polypeptide B (Nppb) are involved in the transmission of itch signals.^{6,8,21,27,36} Neurons expressing the substance P neurokinin-1 receptor (NK1R) represent the majority of ascending somatosensory projection neurons from the spinal and medullary dorsal horn and are implicated in acute itch.^{14,29} Gastrin-releasing peptide receptor (GRPR)-expressing spinal neurons are required for both histaminergic and nonhistaminergic itch.^{7,28} In this study, we developed behavioral tools to assess itch sensitization in an animal model of AD. Using this model, we investigated roles for NK1R- and/or GRPR-expressing spinal neurons in chronic itch.

2. Materials and methods

2.1. Ovalbumin sensitization and behavioral tests

Experiments were performed using adult male C57BL/6 mice (19–27 g) under a protocol approved by the UC Davis Animal Care and Use Committee. The procedure to sensitize mice with OVA was similar to that used previously with minor modification.^{26,34} Mice were given an intraperitoneal injection of OVA (100 µg; Sigma-Aldrich, St Louis, MO), alum (1 mg; Sigma-Aldrich), and pertussis toxin (300 µg Life Technologies, Grand Island, NY) on the first day (**Fig. 1A**). Five days later, they received a subcutaneous injection of 50 µg of OVA or saline alone. Then, local sensitization was performed once a day from day 14 to day 39

Sponsorships or competing interests that may be relevant to content are disclosed at the end of this article.

^a Department of Neurobiology, Physiology and Behavior, University of California, Davis, CA, USA, ^b Department of Dermatology, Department of Anatomy and Cell Biology, and Temple Itch Center, Temple University, Philadelphia, PA, USA.

*Corresponding author. Address: Department of Dermatology, Department of Anatomy and Cell Biology, and Temple Itch Center, Temple University, 3500 Broad St MERB452, Philadelphia, PA19140, USA. Tel.: 1-215-707-9509; fax: 1-215-707-9510. E-mail address: tasuku.akiyama@temple.edu (T. Akiyama).

PAIN 156 (2015) 1240–1246

© 2015 International Association for the Study of Pain

<http://dx.doi.org/10.1097/j.pain.000000000000172>

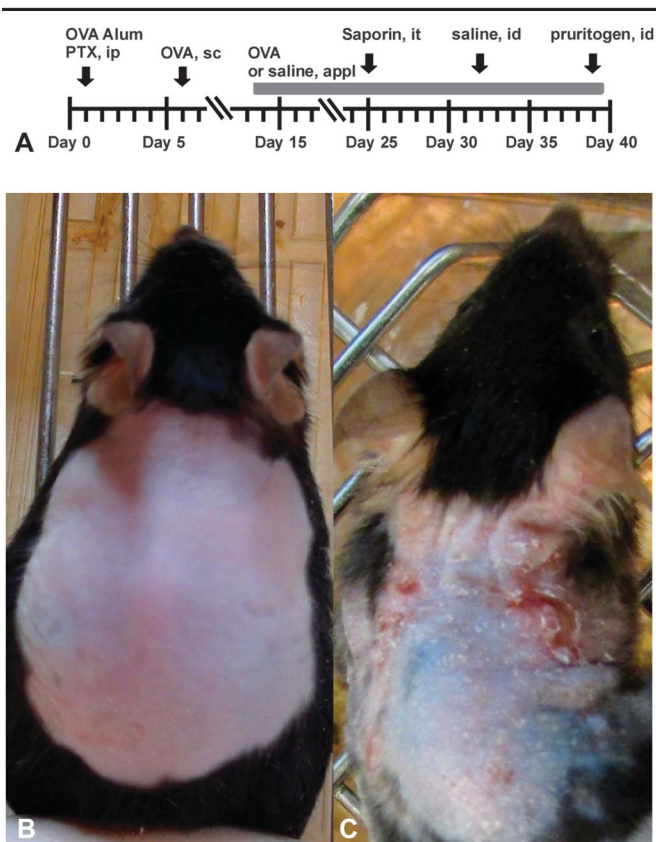


Figure 1. A typical example of an ovalbumin (OVA)-treated mouse. (A), Timeline of treatments. (B), Photograph taken on day 0 before the beginning of OVA treatment. (C), OVA treatment day 25.

after the first systemic sensitization. The local sensitization was conducted as follows. Fur on the rostral back was shaved with electric clippers. Then, gauze (1 × 1 cm) soaked with 0.1% OVA (100 μ L) or saline (100 μ L) was applied to the shaved skin area. The treated skin area was covered with a patch (Tegaderm; 3M Health Care, St Paul, MN). The next day, the patch was removed and an identical piece of soaked gauze followed by Tegaderm patch was reapplied to the same skin area. This procedure was repeated daily up to day 39. Starting at day 14, mice were videotaped for 1 hour twice a week after the removal of the patch to count scratching behavior. The videotape was played back, and the number of scratch bouts was counted by 2 independent observers blinded as to the treatment. After videotaping, alloknesis testing was conducted. Alloknesis was assessed as follows³: the mouse received 5 separate innocuous mechanical stimuli delivered using a von Frey filament (bending force: 0.7 m·N) on the border of the gauze treatment area at 5 randomly selected sites. The presence or absence of a positive response, ie, an immediate hind limb scratch bout directed to the site of mechanical stimulation, was noted for each stimulus before the next one was given. The alloknesis score was the total number of positive responses elicited by the 5 stimuli, ie, 0, 1, 2, 3, 4, or 5. The patch was left continuously on the rostral part of the back of the mouse, except during the measurement of scratching behavior. To assess hyperknesis, a 10 μ L intradermal (i.d.) injection of saline was injected within the treatment area 1 week after the ablation. One week later, mice received an i.d. injection of either chloroquine (30 μ g, Sigma-Aldrich) or histamine (35 μ g, Sigma-Aldrich) within the treatment area (Fig. 1A).

2.2. Saporin injection

To neurotoxically ablate NK1R- or GRPR-expressing spinal neurons, OVA-treated mice received an intrathecal injection of either blank saporin (SAP, 400 ng/5 μ L, Advanced Targeting Systems, San Diego, CA), substance P-SAP (SP-SAP, 100 ng/5 μ L, Advanced Targeting Systems), or bombesin-SAP (BB-SAP, 400 ng/5 μ L, Advanced Targeting Systems) under isoflurane anesthesia on treatment day 25. The same concentration of BB-SAP was used as in previous studies.^{17,25,28} The SP-SAP or BB-SAP was administered intrathecally through lumbar puncture.

2.3. Immunohistochemistry

After completing behavioral testing, the animal was anesthetized with sodium pentobarbital and perfused transcardially with phosphate-buffered saline followed by 4% paraformaldehyde perfusion. The upper cervical spinal cord was harvested and postfixed in 4% paraformaldehyde followed by 30% sucrose. Thirty-micrometer sections of the cervical spinal cord were immunostained with either anti-rabbit GRPR antibody (1:500; LS-A831, Medical & Biological Laboratories International, Woburn, MA)^{16,36} or anti-rabbit NK1R antibody (1:500; AB5060, Millipore, Billerica, MA) using Tyramide Signal Amplification kits (Life Technologies). Briefly, they were incubated with 0.2% Triton X-100 for 10 minutes at room temperature, followed by incubation with peroxidase quenching buffer (PBS + 3% H₂O₂) for either 30 minutes for GRPR antibody or 15 minutes for NK1R at room temperature. Then, they were incubated with 1% blocking reagent for 60 minutes at room temperature, followed by incubation with the primary antibody in 1% blocking reagent overnight at 4°C. The next day, sections were incubated with the horseradish peroxidase-conjugated secondary antibody solution for 45 minutes at room temperature, followed by incubation with the tyramide working solution for 7 minutes at room temperature. Coverslips were mounted with ProLong Gold Antifade Mountant (Life Technologies). Images were captured using a fluorescence microscope (Nikon Eclipse Ti; Technical Instruments, San Francisco, CA).

2.4. Fluorogold injection

To retrogradely label spinoparabrachial and spinothalamic projection neurons, Fluorogold (FG) (Fluorochrome, LLC, Denver, CO) was injected into the lateral parabrachial nucleus or thalamus, respectively. Mice were anesthetized with sodium pentobarbital (65 mg/kg i.p.). The head was fixed in a stereotaxic frame, the calvarium was exposed by midline scalp incision, and a craniotomy made for introduction of a microinjection cannula into the thalamus (AP: 1.8, ML: 1.0, DV: -3.6 and AP: 1.8, ML: 1.6, DV: 3.6) or parabrachial nucleus (AP: 5.0, ML: 1.27, DV: 3.75 and AP: 5.2, ML: 1.27, DV: 3.75). The craniotomy consisted of a small burr hole (<2 mm diameter) made through the skull using an electric drill over the intended injection site as determined using stereotaxic coordinates. At each site, 80 nL of FG was injected. After injection of tracer, the cannula was removed, and the incision was closed with Vetbond (tissue adhesive, 3M). Mice were given an analgesic (Buprenorphine, 0.05 mg/kg subcutaneously; Cardinal Health, Dublin OH) at the conclusion of surgery, and again twice daily, for 1 day after surgery. Animals receiving the tracer injection were then used 1 week later for immunohistochemistry.

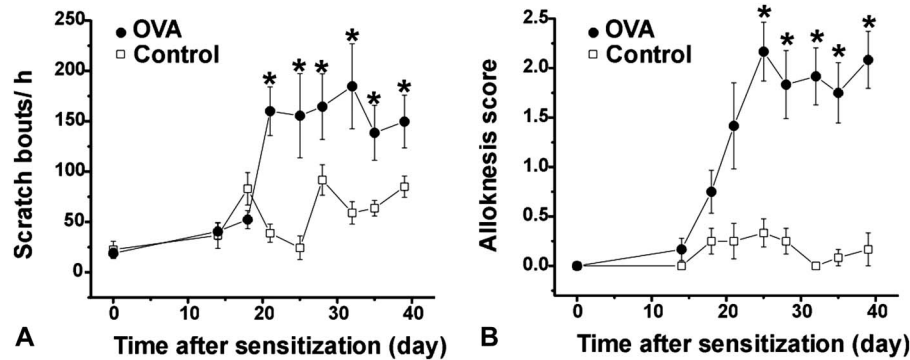


Figure 2. Time-dependent changes in scratch bouts and the alloknesis score in ovalbumin (OVA)-sensitized mice. (A), Spontaneous scratching was measured on pretreatment day 0 and on OVA treatment days 14, 18, 21, 25, 28, 32, 35, and 39. Black dots (●) and white squares (□) show, respectively, OVA (OVA-treated) and control (saline-treated) groups. Error bars are SEM. * $P < 0.05$, significantly different from day 0 (2-way analysis of variance [ANOVA] followed by the Bonferroni test, $F(9,100) = 3.584$). (B), As in (A) for the alloknesis score. Error bars are SEM. * $P < 0.05$, significantly different from day 0 (2-way ANOVA followed by the Bonferroni test, $F(9,220) = 6.417$).

2.5. Data analysis

Between-group comparisons were made by 1-way or 2-way analysis of variance followed by the Bonferroni posttest. In all cases, $P < 0.05$ was considered significant.

3. Results

Ovalbumin treatment induced erythema and excoriation. **Figure 1** shows macroscopic views of the skin before and 25 days after OVA treatment. Naive mice exhibited little spontaneous scratching (**Fig. 2A**). By day 21, counts of spontaneous scratch bouts had increased significantly to a plateau in OVA-treated mice (**Fig. 2A**). The low level of spontaneous scratching in saline-treated control mice increased only slightly over the same period (**Fig. 2A**). Naive mice exhibited an alloknesis score of 0 (**Fig. 2B**). The alloknesis score started to increase by day 18 and was significantly higher by day 25 in OVA-sensitized mice. There was no significant change in the mean alloknesis score over time in saline-treated mice (**Fig. 2B**). The number of scratch bouts evoked by acute i.d. injection of chloroquine was significantly greater in OVA-sensitized vs control mice (**Fig. 3**). In contrast, there was no significant difference in the number of histamine-evoked scratch bouts between OVA-sensitized and control mice.

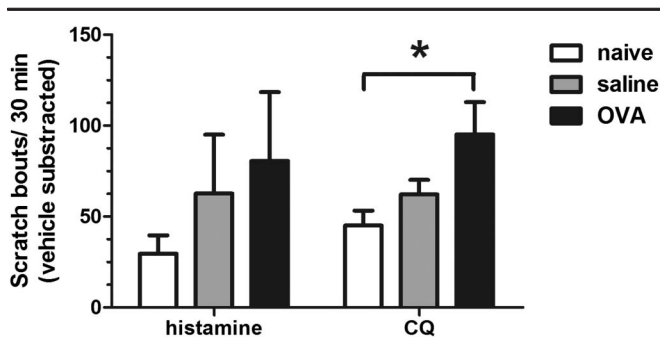


Figure 3. Stimulus-selective hyperknesis in ovalbumin (OVA)-sensitized mice. Either histamine or chloroquine was intradermally injected into the nape of the neck. After the injection, scratch bouts were counted over a 30-minute period. White, gray, and black columns show, respectively, naive, saline-treated, and OVA-treated groups. Error bars are SEM. * $P < 0.05$, significant difference from naive (1-way analysis of variance followed by the Bonferroni test, $F = 0.882$ for the histamine-treated group and $F = 4.337$ for the chloroquine-treated group, $n = 6$).

Selective sensitization of the histamine-independent pathway has been observed in other studies.^{2,24} OVA-sensitized mice seem to be a useful model to investigate the neural mechanisms of itch and itch sensitization in AD.

To investigate the role of NK1R- and GRPR-expressing spinal neurons in itch and its sensitization, mice were treated with either SP-SAP or BB-SAP on day 25 of OVA treatment, at a time when the number of spontaneous scratch bouts and the alloknesis score had both reached a plateau. **Figure 4** shows an image of the dorsal horn of the upper cervical spinal cord. BB-SAP or SP-SAP treatment resulted in significant reductions in expression of NK1R- or GRPR-immunoreactive spinal neurons, respectively (**Fig. 4**). SP-SAP treatment resulted in a significant reduction in ongoing (spontaneous) scratching (**Fig. 5**). In contrast, BB-SAP treatment did not significantly affect the number of spontaneous scratch bouts. SP-SAP treatment resulted in a significant reduction in the alloknesis score, whereas BB-SAP did not affect the alloknesis score (**Fig. 6**). Both BB-SAP and SP-SAP treatments significantly reduced chloroquine-evoked scratching behavior, compared with OVA-sensitized mice receiving blank

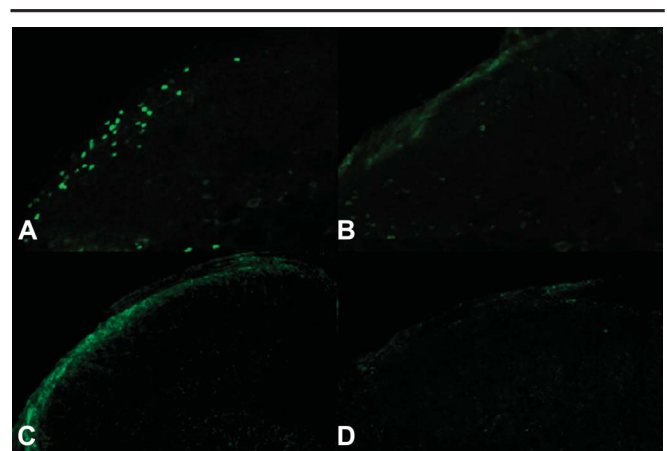


Figure 4. A typical example of gastrin-releasing peptide receptor (GRPR) and neurokinin-1 receptor (NK1R) expression in the upper cervical spinal cord of saporin-treated mice. (A), GRPR expression in the spinal cord of mouse treated with blank saporin. (B), Reduced GRPR expression in the spinal cord of mouse treated with bombesin-saporin. (C), NK1R expression in the spinal cord of mouse treated with blank saporin. (D), Reduced NK1R expression in the spinal cord of mouse treated with substance P-saporin.

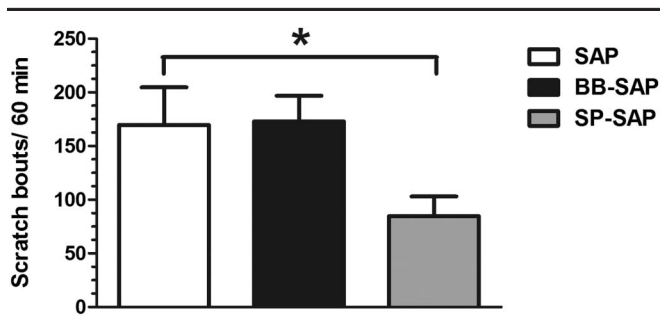


Figure 5. Substance P-saporin reduced ongoing (spontaneous) scratching in ovalbumin (OVA)-sensitized mice. Saporin was intrathecally injected on the day 25 in OVA-sensitized mice. White, black, and gray columns show, respectively, SAP (blank saporin-treated), BB-SAP (bombesin-saporin-treated), and SP-SAP (substance P-saporin-treated) groups. Error bars are SEM. * $P < 0.05$, significant difference from SAP (1-way analysis of variance followed by the Bonferroni test, $F = 3.438$, $n = 6$).

SAP (Fig. 7). Blank SAP did not result in any changes in spontaneous or touch- or chloroquine-evoked scratching compared with OVA-sensitized mice not receiving SAP.

Previous studies suggest that GRPR-expressing spinal neurons are interneurons.^{32,35} We hypothesized that GRPR-expressing spinal neurons may be upstream of itch signaling mediated through NK1R-expressing spinal neurons. To investigate the extent to which NK1R-expressing spinal neurons project in ascending sensory pathways or do not project and are presumptive interneurons, we injected the retrograde tracer FG into the thalamus or lateral parabrachial nucleus. Spinothalamic projection neurons were largely located contralateral to the thalamic injection, whereas spinoparabrachial projection neurons were distributed bilaterally and predominantly in the superficial dorsal horn of the upper cervical (C1-C2) segments examined. Examples of retrogradely labeled neurons are shown in Figure 8. The average numbers of spinoparabrachial tract neurons or spinothalamic tract neurons per section were 5.1 ± 0.4 (SEM, $n = 5$) or 3.1 ± 0.3 (SEM, $n = 5$), respectively. Importantly, 89% (87/98) of spinoparabrachial tract neurons retrogradely labeled by FG were double labeled for NK1R. Similarly, 94% (58/62) of spinothalamic tract neurons retrogradely labeled by FG were double labeled for NK1R.

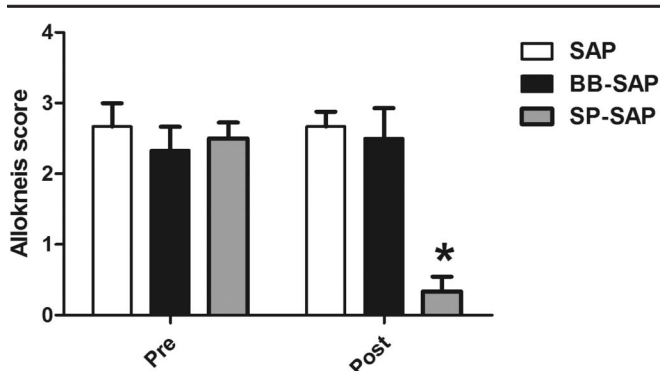


Figure 6. Substance P-saporin reduced the alloknesis score in ovalbumin (OVA)-sensitized mice. Saporin was intrathecally injected on day 25 in OVA-sensitized mice. White, black, and gray columns show, respectively, SAP (blank saporin-treated), BB-SAP (bombesin-saporin-treated), and SP-SAP (substance P-saporin-treated) groups. Error bars are SEM. * $P < 0.05$, significantly different from SAP. Two-way analysis of variance followed by the Bonferroni test, $F(2,30) = 8.010$, $n = 6$.

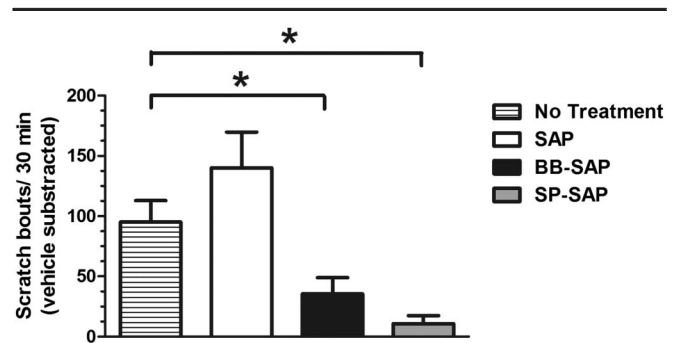


Figure 7. Bombesin-saporin and substance P-saporin reduced chloroquine-evoked scratching in ovalbumin (OVA)-sensitized mice. Saporin was intrathecally injected on day 25 in OVA-sensitized mice. Chloroquine was intradermally injected in ovalbumin-treated skin. Striped, white, black, and gray columns show, respectively, no treatment, SAP (blank saporin-treated), BB-SAP (bombesin-saporin-treated), and SP-SAP (substance P-saporin-treated) groups. The Bar graph plots the mean number of scratch bouts recorded over a 30-minute period after i.d. injection of chloroquine with vehicle-associated scratching subtracted. Error bars are SEM. * $P < 0.05$, significantly different from the no treatment group. One-way analysis of variance followed by the Bonferroni test ($F = 9.848$, $n = 6$).

4. Discussion

Ovalbumin-sensitized mice seem to represent a useful model to examine the neuronal mechanisms underlying itch and its sensitization in AD for the following reasons: (1) OVA-sensitized mice exhibited an increase in ongoing (spontaneous) scratching over an 18-day period, suggesting that chronic itch occurs in this model, (2) OVA-sensitized mice exhibited alloknesis and hyperknesis, which are signs of itch sensitization and are observed in patients with AD. Additionally, alloknesis developed at a delay after the increase in spontaneous scratching. This supports the idea that alloknesis occurs as a result of itch sensitization, (3) Skin symptoms observed macroscopically, although not severe, were characterized by erythema and excoriation.

Here, we show that chloroquine-evoked scratching was significantly enhanced in OVA-sensitized mice, whereas histamine-evoked scratching was not significantly affected. There was a strong trend toward enhancement of histamine-evoked scratching, similar to that observed previously in mice treated to produce dry skin pruritus.² Although we cannot completely exclude the possibility of sensitization of the histamine-dependent pathway based on the current data, selective sensitization of a histamine-independent pathway has been reported in previous studies.^{2,13} In humans, nerve growth factor induced sensitization of cowhage-evoked but not histamine-evoked itch.²⁴ This sensitization correlated with mechanical but not heat hyperalgesia. In a mouse model of chronic dry skin itch, we previously found that scratching evoked by either serotonin or the PAR2/MrgprC11 (protease-activated receptor 2/Mas-related G-protein-coupled receptor C11) agonist SLIGRL was enhanced, whereas histamine-evoked scratching was not enhanced.² Responses of cultured dorsal root ganglion (DRG) neurons to either serotonin or the PAR2/MrgprC11 agonist were enhanced,² whereas their responses to histamine were not significantly affected, suggesting that peripheral sensitization of the histamine-independent pathways plays a major role in hyperknesis and enhanced itch signals that are presumably conveyed to GRPR-expressing spinal neurons.

Using OVA-sensitized mice, we investigated whether spinal neurons that express molecular receptors of the neuropeptides

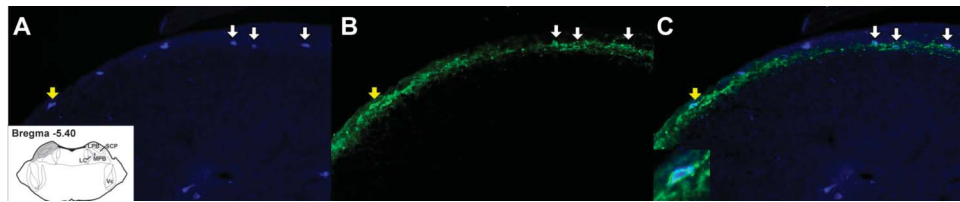


Figure 8. Double labeling of spinoparabrachial projection neurons with NK1R. (A), Fluorescence microscope image of the superficial dorsal horn of C2 spinal cord section showing neurons retrogradely labeled with Fluorogold (FG) (blue). Inset shows the injection site of FG. (B), Fluorescence microscope image showing NK1R-immunopositive neurons (green) in the superficial dorsal horn (same section as in A). (C), Merged image of (A) and (B). Inset shows high magnification of neuron to which the yellow arrow points. White arrows in (A-C) point to neurons exhibiting double labeling (teal in C). LC, locus coeruleus; LPB, lateral parabrachial nucleus; MPB, med. parabrachial n.; SCP, superior cerebellar peduncle; Vc, trigeminal subnucleus caudalis.

gastrin-releasing peptide and substance P are involved in itch sensitization in this mouse model of AD. Here, we show that SP-SAP ablated NK1R-expressing neurons in the spinal dorsal horn and significantly attenuated behavioral signs of ongoing itch, allodynia, and hyperknesis, suggesting that NK1R-expressing spinal neurons have a major role in itch sensitization in AD. We previously found that NK1R-expressing spinal neurons are involved in conveying acute itch signaling as well.¹⁴ Intracisternal injection of SP-SAP ablated NK1R-expressing spinal neurons in the superficial medullary dorsal horn and significantly reduced scratching evoked by intradermal injection of serotonin in rats.¹⁴ NK1R-expressing spinal neurons in the superficial dorsal horn of the rat cervical spinal cord are known to give rise to ascending projections.²⁹ This study confirms that a large percentage of ascending projection neurons express NK1R in the mouse cervical spinal cord. NK1R-expressing spinal neurons plausibly relay itch information to the brain under conditions of both acute and chronic itch.

GRPR-expressing spinal neurons play a critical role in the transmission of itch signals.²⁸ BB-SAP-treated mice did not show an increase in spontaneous scratching after repeated treatment with diphenylcyclopropenone, whereas blank saporin-treated mice exhibited an increase in spontaneous scratching,²⁸ suggesting that GRPR-expressing spinal neurons participate in the development of itch sensitization. In contrast, in this study, BB-SAP treatment in OVA-sensitized mice resulted in a reduction in chloroquine-evoked hyperknesis but not in spontaneous scratching or allodynia. This suggests that GRPR-expressing spinal neurons are not essential for the maintenance of itch sensitization and that different neuronal pathways underlie ongoing itch, allodynia, and hyperknesis. The latter is supported by our recent study showing that the κ -opioid receptor agonist,

nalfurafine, inhibited spontaneous scratching, but not allodynia, in chronic dry skin-associated itch in mice.⁴

Both SP-SAP and BB-SAP treatment resulted in a significant reduction in hyperknesis. Hyperknesis observed in the OVA-treated animals might be explained by peripheral sensitization of primary afferent pruriceptors. We previously reported that sensory DRG neurons innervating a region of chronic dry skin treatment exhibited enhanced responses to serotonin and SLIGRL but not histamine,² consistent with peripheral sensitization of pruriceptors signaling nonhistaminergic itch. In OVA-treated mice, activation of sensitized pruriceptors by chloroquine would elicit enhanced responses in both NK1R- and GRPR-expressing spinal neurons, either in parallel or serially, to result in hyperknesis.

Here, we show that animals treated with SP-SAP, but not BB-SAP, exhibited significant reductions in allodynia and ongoing scratching behavior. A speculative explanation for this is a selective central sensitization of spinal neurons expressing NK1R, but not neurons expressing GRPR (Fig. 9). NK1R-expressing spinal neurons receive polysynaptic input from mechanoreceptor afferents (Fig. 9A).³¹ Central sensitization would result in enhanced responsiveness of the NK1R-expressing neurons to low-threshold mechanical stimulation, similar to the enhanced mechanical sensitivity observed in lumbar spinal neurons after their activation by intradermal histamine.⁵ The heightened mechanically evoked response of these neurons, most of which project in spinothalamic or spinoparabrachial pathways, presumably signals allodynia. Alternatively, disinhibition of polysynaptic mechanical inputs can contribute to allodynia. Polysynaptic mechanical inputs are constitutively inhibited by GABAergic and glycinergic inhibitory interneurons (Fig. 9B).^{11,31} Central sensitization of NK1R-expressing spinal neurons could also account for ongoing (spontaneous)

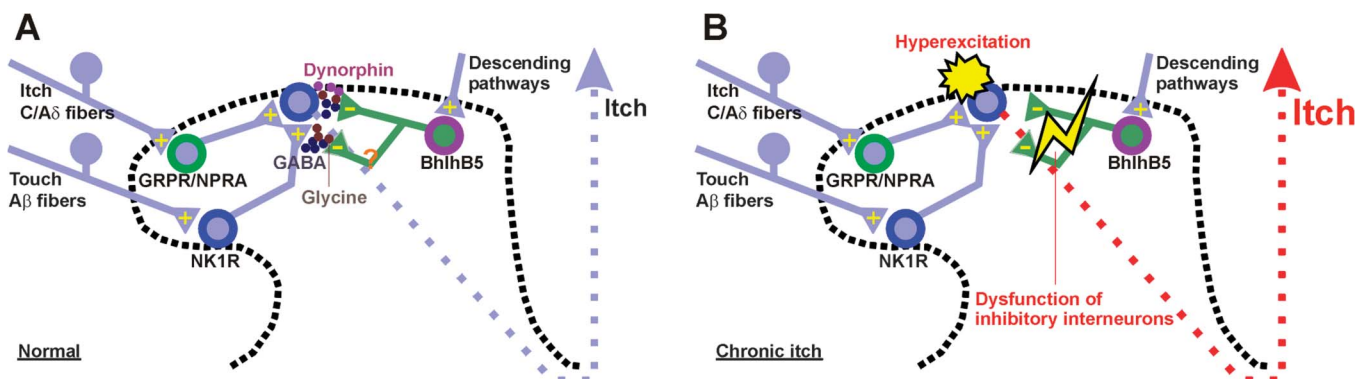


Figure 9. Schematic diagram. (A), Baseline conditions. (B), Ovalbumin-sensitized condition. See text for further explanation.

scratching behavior, which was significantly reduced after SP-SAP treatment. Here, we show that neurotoxic ablation of GRPR-expressing neurons did not result in reduced allodynia or ongoing scratching behavior. This implies that GRPR-expressing neurons are presynaptic to (ie, upstream of) NK1R-expressing neurons in the spinal itch-signaling pathway. It also implies that GRPR-expressing spinal neurons did not become sensitized, although they were required for the expression of hyperalgesia, which we speculate to be mediated by peripheral sensitization of pruriceptors (see preceding paragraph). Input from sensitized pruriceptors is a logical trigger for the development of central itch sensitization, characterized by ongoing (spontaneous) scratching and allodynia. Thus, it is unclear why NK1R- but not GRPR-expressing spinal neurons were required for the full expression of itch sensitization (ie, spontaneous scratching and allodynia). Speculatively, NK1R-expressing neurons developed a greater degree of central sensitization than GRPR-expressing neurons, achieving a sufficient level of activity to generate ongoing (spontaneous) scratching behavior. Ablation of GRPR-expressing neurons might disrupt inhibitory (eg, Bhlhb5 interneurons²³) and/or excitatory (eg, testicular orphan nuclear receptor 4 [TR4]³²) interneuronal networks, resulting in facilitation and/or disinhibition that would contribute to the sensitization of postsynaptic NK1R-expressing neurons (Fig. 9B). Re-establishment of GABAergic interneurons by transplantation of precursors of cortical inhibitory interneurons rescued itch-related phenotypes of Bhlhb5 knockout mice,¹³ presumably because of restoration of spinal inhibition.

We observed retrogradely labeled neurons to be located predominantly in the superficial dorsal horn at upper cervical (C1-2) and caudal medullary levels after FG injections in the lateral parabrachial nucleus or ventral posteromedial thalamus, confirming recent studies in mice,¹⁵ and rats.^{9,10} Using a double-label strategy, we observed that 89% of spinoparabrachial and 94% of spinothalamic projection neurons coexpressed NK1R. The high incidence of NK1R expression in spinoparabrachial and spinothalamic tract projection neurons is consistent with previous studies using rats.³⁰ Using antidromic stimulation to functionally characterize ascending projection neurons in rats, 27% of trigeminothalamic²² and 62% of trigeminoparabrachial¹⁹ neurons responded to intradermal injection of the itch mediator, serotonin, and additional itch (chloroquine, histamine) and pain mediators (capsaicin, mustard oil). We conclude that a substantial fraction of ascending spinothalamic and spinoparabrachial projection neurons that express the NK1R function to convey itch information to higher centers in the brain.

Few GRPR-expressing spinal neurons coexpress NK1R in the dorsal horn,³⁵ implying that GRPR-expressing spinal neurons are interneurons. This is consistent with a previous study using TR4 knockout mice.³² In these mice, a dramatic loss of GRPR-expressing spinal neurons was observed, whereas projection neurons were preserved. Presumably, NK1R-expressing spinal neurons are downstream of GRPR-expressing spinal neurons.

This study reveals a major role for NK1R-expressing spinal neurons in chronic itch. GRPR-expressing spinal neurons are important for the development, but not the maintenance, of itch sensitization. Desensitization of NK1R-expressing spinal neurons might be a useful approach to treat chronic itch, as an alternative to blocking peripheral molecular targets.

Conflict of interest statement

The authors have no conflicts of interest to declare.

The work was supported by grants from the National Institutes of Health DE013685, AR057194, and AR063228 and National Eczema Association grant.

Article history:

Received 31 October 2014

Received in revised form 26 February 2015

Accepted 23 March 2015

Available online 2 April 2015

References

- Akiyama T, Carstens E. Neural processing of itch. *Neuroscience* 2013; 250:697–714.
- Akiyama T, Carstens MI, Carstens E. Enhanced scratching evoked by PAR-2 agonist and 5-HT but not histamine in a mouse model of chronic dry skin itch. *PAIN* 2010;151:378–83.
- Akiyama T, Carstens MI, Ikoma A, Cevikbas F, Steinhoff M, Carstens E. Mouse model of touch-evoked itch (alloknesis). *J Invest Dermatol* 2012; 132:1886–91.
- Akiyama T, Carstens MI, Piecha D, Steppan S, Carstens E. Nalfurafine suppresses pruritogen- and touch-evoked scratching behavior in models of acute and chronic itch in mice. *Acta Derm Venereol* 2015; 95:147–50.
- Akiyama T, Nagamine M, Carstens MI, Carstens E. Behavioral model of itch, allodynia, pain and allodynia in the lower hindlimb and correlative responses of lumbar dorsal horn neurons in the mouse. *Neuroscience* 2014;266:38–46.
- Akiyama T, Tominaga M, Davoodi A, Nagamine M, Blansit K, Horwitz A, Carstens MI, Carstens E. Roles for substance P and gastrin-releasing peptide as neurotransmitters released by primary afferent pruriceptors. *J Neurophysiol* 2013;109:742–8.
- Akiyama T, Tominaga M, Takamori K, Carstens MI, Carstens E. Role of spinal bombesin-responsive neurons in nonhistaminergic itch. *J Neurophysiol* 2014;112:2283–9.
- Akiyama T, Tominaga M, Takamori K, Carstens MI, Carstens E. Roles of glutamate, substance P, and gastrin-releasing peptide as spinal neurotransmitters of histaminergic and nonhistaminergic itch. *PAIN* 2014;155:80–92.
- Al-Khater KM, Kerr R, Todd AJ. A quantitative study of spinothalamic neurons in laminae I, III, and IV in lumbar and cervical segments of the rat spinal cord. *J Comp Neurol* 2008;511:1–18.
- Al-Khater KM, Todd AJ. Collateral projections of neurons in laminae I, III, and IV of rat spinal cord to thalamus, periaqueductal gray matter, and lateral parabrachial area. *J Comp Neurol* 2009;515:629–46.
- Bardoni R, Takazawa T, Tong CK, Choudhury P, Scherrer G, Macdermott AB. Pre- and postsynaptic inhibitory control in the spinal cord dorsal horn. *Ann N Y Acad Sci* 2013;1279:90–6.
- Bautista DM, Wilson SR, Hoon MA. Why we scratch an itch: the molecules, cells and circuits of itch. *Nat Neurosci* 2014;17:175–82.
- Braz JM, Juarez-Salinas D, Ross SE, Basbaum AI. Transplant restoration of spinal cord inhibitory controls ameliorates neuropathic itch. *J Clin Invest* 2014;124:3612–16.
- Carstens EE, Carstens MI, Simons CT, Jinks SL. Dorsal horn neurons expressing NK-1 receptors mediate scratching in rats. *Neuroreport* 2010; 21:303–8.
- Davidson S, Truong H, Giesler GJ Jr. Quantitative analysis of spinothalamic tract neurons in adult and developing mouse. *J Comp Neurol* 2010;518:3193–204.
- Han L, Ma C, Liu Q, Weng HJ, Cui Y, Tang Z, Kim Y, Nie H, Qu L, Patel KN, Li Z, McNeil B, He S, Guan Y, Xiao B, Lamotte RH, Dong X. A subpopulation of nociceptors specifically linked to itch. *Nat Neurosci* 2013;16:174–82.
- Han N, Zu JY, Chai J. Spinal bombesin-recognized neurones mediate more nonhistaminergic than histaminergic sensation of itch in mice. *Clin Exp Dermatol* 2012;37:290–5.
- Imamachi N, Park GH, Lee H, Anderson DJ, Simon MI, Basbaum AI, Han SK. TRPV1-expressing primary afferents generate behavioral responses to pruritogens via multiple mechanisms. *Proc Natl Acad Sci U S A* 2009;106:11330–5.
- Jansen NA, Giesler GJ Jr. Response characteristics of pruriceptive and nociceptive trigeminoparabrachial tract neurons in the rat. *J Neurophysiol* 2015;113:58–70.
- LaMotte RH, Dong X, Ringkamp M. Sensory neurons and circuits mediating itch. *Nat Rev Neurosci* 2014;15:19–31.

- [21] Mishra SK, Hoon MA. The cells and circuitry for itch responses in mice. *Science* 2013;340:968–71.
- [22] Moser HR, Giesler GJ Jr. Characterization of pruriceptive trigeminothalamic tract neurons in rats. *J Neurophysiol* 2014;111:1574–89.
- [23] Ross SE, Mardinly AR, McCord AE, Zurawski J, Cohen S, Jung C, Hu L, Mok SI, Shah A, Savner EM, Tolias C, Corfas R, Chen S, Inquimbert P, Xu Y, McInnes RR, Rice FL, Corfas G, Ma Q, Woolf CJ, Greenberg ME. Loss of inhibitory interneurons in the dorsal spinal cord and elevated itch in *Bhlhb5* mutant mice. *Neuron* 2010;65:886–98.
- [24] Rukwied RR, Main M, Weinkauff B, Schmelz M. NGF sensitizes nociceptors for cowhage- but not histamine-induced itch in human skin. *J Invest Dermatol* 2013;133:268–70.
- [25] Sasaki A, Adhikari S, Andoh T, Kuraishi Y. BB2 bombesin receptor-expressing spinal neurons transmit herpes-associated itch by BB2 receptor-independent signaling. *Neuroreport* 2013;24:652–6.
- [26] Spergel JM, Mizoguchi E, Brewer JP, Martin TR, Bhan AK, Geha RS. Epicutaneous sensitization with protein antigen induces localized allergic dermatitis and hyperresponsiveness to methacholine after single exposure to aerosolized antigen in mice. *J Clin Invest* 1998;101:1614–22.
- [27] Sun YG, Chen ZF. A gastrin-releasing peptide receptor mediates the itch sensation in the spinal cord. *Nature* 2007;448:700–3.
- [28] Sun YG, Zhao ZQ, Meng XL, Yin J, Liu XY, Chen ZF. Cellular basis of itch sensation. *Science* 2009;325:1531–4.
- [29] Todd AJ. Neuronal circuitry for pain processing in the dorsal horn. *Nat Rev Neurosci* 2010;11:823–36.
- [30] Todd AJ, McGill MM, Shehab SA. Neurokinin 1 receptor expression by neurons in laminae I, III and IV of the rat spinal dorsal horn that project to the brainstem. *Eur J Neurosci* 2000;12:689–700.
- [31] Torsney C, MacDermott AB. Disinhibition opens the gate to pathological pain signaling in superficial neurokinin 1 receptor-expressing neurons in rat spinal cord. *J Neurosci* 2006;26:1833–43.
- [32] Wang X, Zhang J, Eberhart D, Urban R, Meda K, Solorzano C, Yamanaka H, Rice D, Basbaum AI. Excitatory superficial dorsal horn interneurons are functionally heterogeneous and required for the full behavioral expression of pain and itch. *Neuron* 2013;78:312–24.
- [33] Wilson SR, Gerhold KA, Bifolck-Fisher A, Liu Q, Patel KN, Dong X, Bautista DM. TRPA1 is required for histamine-independent, Mas-related G protein-coupled receptor-mediated itch. *Nat Neurosci* 2011;14:595–602.
- [34] Yatsuzuka R, Inoue T, Jiang S, Nakano Y, Kamei C. Development of new atopic dermatitis models characterized by not only itching but also inflammatory skin in mice. *Eur J Pharmacol* 2007;565:225–31.
- [35] Zhao ZQ, Huo FQ, Jeffrey J, Hampton L, Demehri S, Kim S, Liu XY, Barry DM, Wan L, Liu ZC, Li H, Turkoz A, Ma K, Cornelius LA, Kopan R, Batty JF Jr, Zhong J, Chen ZF. Chronic itch development in sensory neurons requires BRAF signaling pathways. *J Clin Invest* 2013;123:4769–80.
- [36] Zhao ZQ, Wan L, Liu XY, Huo FQ, Li H, Barry DM, Krieger S, Kim S, Liu ZC, Xu J, Rogers BE, Li YQ, Chen ZF. Cross-inhibition of NMBR and GRPR signaling maintains normal histaminergic itch transmission. *J Neurosci* 2014;34:12402–14.